



2020 Calendar

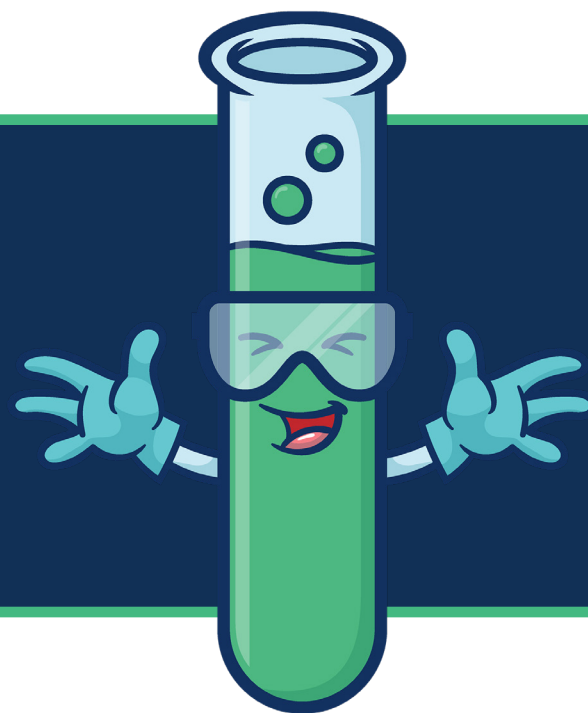
Analytical Reagents

Our Analytical Reagents cover a variety of non-spectrographic or non-chromatographic methods, including pH, conductivity and alkalinity. Single-component IC/ISE standards may also be used as wet chemical standards. Sub-boiling acids and reagents used for dilution of standards and samples are also available.

20% off Analytical Reagents

Throughout the month of January, receive 20% off your order of Analytical Reagents over \$500.

Use Promo Code **AR20** when placing your order of Analytical Reagents



January 2020

| SUNDAY | MONDAY | TUESDAY | WEDNESDAY | THURSDAY | FRIDAY | SATURDAY |
|--------|---------------------------------------|---------------------------------------|---------------------------------------|---------------------------------------|---------------------------------------|----------|
| | | | 1 New Year's Day Company Closed | 2 | 3 | 4 |
| 5 | 6 | 7 | 8 | 9 | 10 | 11 |
| 12 | 13 Winter Conference Tucson, AZ | 14 Winter Conference Tucson, AZ | 15 Winter Conference Tucson, AZ | 16 Winter Conference Tucson, AZ | 17 Winter Conference Tucson, AZ | 18 |
| 19 | 20 Martin Luther King Jr. Day | 21 | 22 | 23 | 24 | 25 |
| 26 | 27 | 28 | 29 | 30 | 31 | |

| DECEMBER | | | | | | |
|----------|----|----|----|----|----|----|
| S | M | T | W | T | F | S |
| 1 | 2 | 3 | 4 | 5 | 6 | 7 |
| 8 | 9 | 10 | 11 | 12 | 13 | 14 |
| 15 | 16 | 17 | 18 | 19 | 20 | 21 |
| 22 | 23 | 24 | 25 | 26 | 27 | 28 |
| 29 | 30 | 31 | | | | |

NOTES

| FEBRUARY | | | | | | |
|----------|----|----|----|----|----|----|
| S | M | T | W | T | F | S |
| | | | | | | 1 |
| 2 | 3 | 4 | 5 | 6 | 7 | 8 |
| 9 | 10 | 11 | 12 | 13 | 14 | 15 |
| 16 | 17 | 18 | 19 | 20 | 21 | 22 |
| 23 | 24 | 25 | 26 | 27 | 28 | 29 |

QC Standards

From calibration verification standards to analytical mixtures that measure instrument response, we have what you need. Our QC Standards line is certified ISO 17025 and 17034 and is designed to meet your instrument's needs. Also, check out our interference check, memory check, and wavelength calibration solutions to keep your instrument running in ideal conditions.



Enjoy Starbucks on us!

Throughout the month of February, receive a \$15 Starbucks gift card with your order of QC Standards over \$100.

Use Promo Code **QC15** when placing your order of QC Standards

February 2020

| SUNDAY | MONDAY | TUESDAY | WEDNESDAY | THURSDAY | FRIDAY | SATURDAY |
|--------------------|-----------------------|---------|-----------|----------|-----------------------|----------|
| | | | | | | 1 |
| 2 Groundhog Day | 3 | 4 | 5 | 6 | 7 | 8 |
| 9 | 10 | 11 | 12 | 13 | 14 Valentine's Day | 15 |
| 16 | 17 President's Day | 18 | 19 | 20 | 21 | 22 |
| 23 | 24 | 25 | 26 | 27 | 28 | 29 |

| JANUARY | | | | | | |
|---------|----|----|----|----|----|----|
| S | M | T | W | T | F | S |
| | | | 1 | 2 | 3 | 4 |
| 5 | 6 | 7 | 8 | 9 | 10 | 11 |
| 12 | 13 | 14 | 15 | 16 | 17 | 18 |
| 19 | 20 | 21 | 22 | 23 | 24 | 25 |
| 26 | 27 | 28 | 29 | 30 | 31 | |

NOTES

| MARCH | | | | | | |
|-------|----|----|----|----|----|----|
| S | M | T | W | T | F | S |
| 1 | 2 | 3 | 4 | 5 | 6 | 7 |
| 8 | 9 | 10 | 11 | 12 | 13 | 14 |
| 15 | 16 | 17 | 18 | 19 | 20 | 21 |
| 22 | 23 | 24 | 25 | 26 | 27 | 28 |
| 29 | 30 | 31 | | | | |

ICP-MS Singles at 10 µg/mL

We offer a broad range of ISO 17034 certified ICP-MS single standards. The accuracy of all these standards is verified against NIST Spectrometric Standard Solutions, where available (otherwise against an ISO 17034 second source Certified Reference Material).

10% off ICP-MS Singles at 10 µg/mL

Throughout the month of March, receive 10% off your order of ICP-MS Singles at 10 µg/mL over \$200.

Use Promo Code **10PPM10** when placing your order of ICP-MS Singles at 10 µg/mL



March 2020

| SUNDAY | MONDAY | TUESDAY | WEDNESDAY | THURSDAY | FRIDAY | SATURDAY |
|--------|-----------------------------|--|-----------------------------|-----------------------------|--------|----------|
| 1 | 2 Pittcon Chicago, IL | 3 Pittcon Chicago, IL | 4 Pittcon Chicago, IL | 5 Pittcon Chicago, IL | 6 | 7 |
| 8 | 9 | 10 | 11 | 12 | 13 | 14 |
| 15 | 16 ArabLab 2020 Dubai | 17 St. Patrick's Day ArabLab 2020 Dubai | 18 ArabLab 2020 Dubai | 19 | 20 | 21 |
| 22 | 23 | 24 | 25 | 26 | 27 | 28 |
| 29 | 30 | 31 Analytica 2020 Munich | | | | |

| FEBRUARY | | | | | | |
|----------|----|----|----|----|----|----|
| S | M | T | W | T | F | S |
| | | | | | | 1 |
| 2 | 3 | 4 | 5 | 6 | 7 | 8 |
| 9 | 10 | 11 | 12 | 13 | 14 | 15 |
| 16 | 17 | 18 | 19 | 20 | 21 | 22 |
| 23 | 24 | 25 | 26 | 27 | 28 | 29 |

NOTES

| APRIL | | | | | | |
|-------|----|----|----|----|----|----|
| S | M | T | W | T | F | S |
| | | | 1 | 2 | 3 | 4 |
| 5 | 6 | 7 | 8 | 9 | 10 | 11 |
| 12 | 13 | 14 | 15 | 16 | 17 | 18 |
| 19 | 20 | 21 | 22 | 23 | 24 | 25 |
| 26 | 27 | 28 | 29 | 30 | | |

ICP-MS Multi's at 10 µg/mL

We offer a broad range of ISO 17034 certified ICP-MS multi standards. The accuracy of all standards is verified against NIST Spectrometric Standard Solutions, where available (otherwise against an ISO 17034 second source Certified Reference Material).



Enjoy Domino's pizza on us!

Throughout the month of April, receive a \$20 Domino's Pizza gift card with your order of 10 µg/mL Multi's over \$300.

Use Promo Code **10PPM20** when placing your order of ICP-MS Multi's at 10 µg/mL

April 2020

| SUNDAY | MONDAY | TUESDAY | WEDNESDAY | THURSDAY | FRIDAY | SATURDAY |
|--------|--------|---|---|---|---|----------|
| | | | 1 Analytica 2020 Munich | 2 | 3 | 4 |
| 5 | 6 | 7 | 8 | 9 | 10 | 11 |
| 12 | 13 | 14 | 15 | 16 | 17 | 18 |
| 19 | 20 | 21 Analytica Russia 2020 Moscow | 22 Analytica Russia 2020 Moscow | 23 Analytica Russia 2020 Moscow | 24 Analytica Russia 2020 Moscow | 25 |
| 26 | 27 | 28 | 29 | 30 | | |

| MARCH | | | | | | |
|-------|----|----|----|----|----|----|
| S | M | T | W | T | F | S |
| 1 | 2 | 3 | 4 | 5 | 6 | 7 |
| 8 | 9 | 10 | 11 | 12 | 13 | 14 |
| 15 | 16 | 17 | 18 | 19 | 20 | 21 |
| 22 | 23 | 24 | 25 | 26 | 27 | 28 |
| 29 | 30 | 31 | | | | |

NOTES

| MAY | | | | | | |
|----------|----|----|----|----|----|----|
| S | M | T | W | T | F | S |
| | | | | | 1 | 2 |
| 3 | 4 | 5 | 6 | 7 | 8 | 9 |
| 10 | 11 | 12 | 13 | 14 | 15 | 16 |
| 17 | 18 | 19 | 20 | 21 | 22 | 23 |
| 24 31 | 25 | 26 | 27 | 28 | 29 | 30 |

Water Standards

We offer standards designed to be used in laboratory performance evaluation, quality control, and method development when conducting drinking water, wastewater, soil, or hazardous waste analysis. Included in this product line are solutions designed to simulate natural or polluted water.

10% off Water Standards

Throughout the month of May, receive 10% off your order of Water Standards over \$200.

Use Promo Code **WATER10** when placing your order of Water Standards



May 2020

| SUNDAY | MONDAY | TUESDAY | WEDNESDAY | THURSDAY | FRIDAY | SATURDAY |
|----------|--------------------------------------|--|-----------------------------|-----------------------------|--------|----------|
| | | | | | 1 | 2 |
| 3 | 4 Setac Europe Dublin | 5 Cinco de Mayo Setac Europe Dublin | 6 Setac Europe Dublin | 7 Setac Europe Dublin | 8 | 9 |
| 10 | 11 | 12 | 13 | 14 | 15 | 16 |
| 17 | 18 | 19 | 20 | 21 | 22 | 23 |
| 24 31 | 25 Memorial Day Company Closed | 26 | 27 | 28 | 29 | 30 |

| APRIL | | | | | | |
|-------|----|----|----|----|----|----|
| S | M | T | W | T | F | S |
| | | | 1 | 2 | 3 | 4 |
| 5 | 6 | 7 | 8 | 9 | 10 | 11 |
| 12 | 13 | 14 | 15 | 16 | 17 | 18 |
| 19 | 20 | 21 | 22 | 23 | 24 | 25 |
| 26 | 27 | 28 | 29 | 30 | | |

NOTES

| JUNE | | | | | | |
|------|----|----|----|----|----|----|
| S | M | T | W | T | F | S |
| | 1 | 2 | 3 | 4 | 5 | 6 |
| 7 | 8 | 9 | 10 | 11 | 12 | 13 |
| 14 | 15 | 16 | 17 | 18 | 19 | 20 |
| 21 | 22 | 23 | 24 | 25 | 26 | 27 |
| 28 | 29 | 30 | | | | |

ICP Singles*

We offer a broad range of ISO 17034 certified single ICP standards in concentrations of 100, 1,000 and 10,000 ug/mL. The accuracy of all these standards is verified against NIST Spectrometric Standard Solutions, where available (otherwise against an ISO 17034 second source Certified Reference Material).



20% off ICP Singles

Throughout the month of June, receive 20% off your order of ICP Singles* over \$500.

Use Promo Code **ICPS20** when placing your order of ICP Singles*

* ICP Precious Metals Singles are excluded

June 2020

| SUNDAY | MONDAY | TUESDAY | WEDNESDAY | THURSDAY | FRIDAY | SATURDAY |
|--------|--------|---------|-----------|----------|--------|----------|
| | 1 | 2 | 3 | 4 | 5 | 6 |
| 7 | 8 | 9 | 10 | 11 | 12 | 13 |
| 14 | 15 | 16 | 17 | 18 | 19 | 20 |
| 21 | 22 | 23 | 24 | 25 | 26 | 27 |
| 28 | 29 | 30 | | | | |

| MAY | | | | | | |
|----------|----|----|----|----|----|----|
| S | M | T | W | T | F | S |
| | | | | | 1 | 2 |
| 3 | 4 | 5 | 6 | 7 | 8 | 9 |
| 10 | 11 | 12 | 13 | 14 | 15 | 16 |
| 17 | 18 | 19 | 20 | 21 | 22 | 23 |
| 24 31 | 25 | 26 | 27 | 28 | 29 | 30 |

NOTES

| JULY | | | | | | |
|------|----|----|----|----|----|----|
| S | M | T | W | T | F | S |
| | | | 1 | 2 | 3 | 4 |
| 5 | 6 | 7 | 8 | 9 | 10 | 11 |
| 12 | 13 | 14 | 15 | 16 | 17 | 18 |
| 19 | 20 | 21 | 22 | 23 | 24 | 25 |
| 26 | 27 | 28 | 29 | 30 | 31 | |

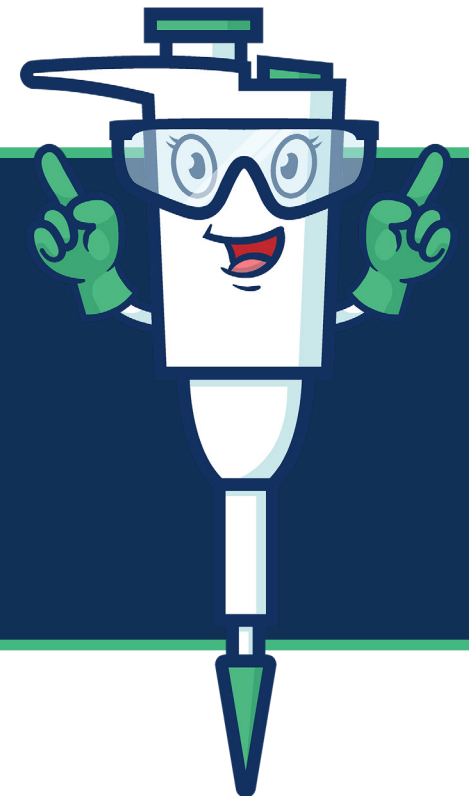
Industrial Hygiene Standards

We offer a large selection of products designed to meet the needs for quality control or method development for industrial hygiene analysis. These standards are designed to be compatible with NIOSH, OSHA, ASTM, or EPA methods used for Industrial Hygiene or Air Monitoring purposes. All products are ISO 17034 certified reference materials.

10% off Industrial Hygiene Standards

Throughout the month of July, receive 10% off your order of Industrial Hygiene Standards over \$200.

Use Promo Code **IHS10** when placing your order of Industrial Hygiene Standards



July 2020

| SUNDAY | MONDAY | TUESDAY | WEDNESDAY | THURSDAY | FRIDAY | SATURDAY |
|--------|--------|---------|-----------|----------|---------------------|-----------------------|
| | | | 1 | 2 | 3 Company Closed | 4 Independence Day |
| 5 | 6 | 7 | 8 | 9 | 10 | 11 |
| 12 | 13 | 14 | 15 | 16 | 17 | 18 |
| 19 | 20 | 21 | 22 | 23 | 24 | 25 |
| 26 | 27 | 28 | 29 | 30 | 31 | |

| JUNE | | | | | | |
|------|----|----|----|----|----|----|
| S | M | T | W | T | F | S |
| | 1 | 2 | 3 | 4 | 5 | 6 |
| 7 | 8 | 9 | 10 | 11 | 12 | 13 |
| 14 | 15 | 16 | 17 | 18 | 19 | 20 |
| 21 | 22 | 23 | 24 | 25 | 26 | 27 |
| 28 | 29 | 30 | | | | |

NOTES

| AUGUST | | | | | | |
|----------|----------|----|----|----|----|----|
| S | M | T | W | T | F | S |
| | | | | | | 1 |
| 2 | 3 | 4 | 5 | 6 | 7 | 8 |
| 9 | 10 | 11 | 12 | 13 | 14 | 15 |
| 16 | 17 | 18 | 19 | 20 | 21 | 22 |
| 23 30 | 24 31 | 25 | 26 | 27 | 28 | 29 |

ICP Precious Metal Singles

We offer a broad range of ISO 17034 certified ICP precious metal single standards. The accuracy of all standards is verified against NIST Spectrometric Standard Solutions, where available (otherwise against an ISO 17034 second source Certified Reference Material).



Enjoy Starbucks on us!

Throughout the month of August, receive a \$15 Starbucks gift card with your order of ICP Precious Metal Singles over \$100.

Use Promo Code **ICPPREC15** when placing your order of ICP Precious Metal Singles

August 2020

| SUNDAY | MONDAY | TUESDAY | WEDNESDAY | THURSDAY | FRIDAY | SATURDAY |
|--------|-----------------------|---------|-----------|----------|--------|----------|
| | | | | | | 1 |
| 2 | 3 | 4 | 5 | 6 | 7 | 8 |
| 9 | 10 | 11 | 12 | 13 | 14 | 15 |
| 16 | 17 | 18 | 19 | 20 | 21 | 22 |
| 23 | 24 | 25 | 26 | 27 | 28 | 29 |
| 30 | Dioxin 2020 France | 31 | | | | |

| JULY | | | | | | |
|------|----|----|----|----|----|----|
| S | M | T | W | T | F | S |
| | | | 1 | 2 | 3 | 4 |
| 5 | 6 | 7 | 8 | 9 | 10 | 11 |
| 12 | 13 | 14 | 15 | 16 | 17 | 18 |
| 19 | 20 | 21 | 22 | 23 | 24 | 25 |
| 26 | 27 | 28 | 29 | 30 | 31 | |

NOTES

| SEPTEMBER | | | | | | |
|-----------|----|----|----|----|----|----|
| S | M | T | W | T | F | S |
| | | 1 | 2 | 3 | 4 | 5 |
| 6 | 7 | 8 | 9 | 10 | 11 | 12 |
| 13 | 14 | 15 | 16 | 17 | 18 | 19 |
| 20 | 21 | 22 | 23 | 24 | 25 | 26 |
| 27 | 28 | 29 | 30 | | | |

Custom Mixes

We welcome requests for single and multi-element standards. Our chemists have extensive experience in developing standards and will work with you to design the optimum product. Custom products include a certificate of analysis with NIST traceability, where possible. Pricing for 100 mL or smaller, 250 mL, 500 mL, and 1000 mL or larger solutions are available upon request. A variety of packaging options are available to accommodate your special needs. In addition to aqueous solutions, custom standards can be prepared in a variety of oils and organic solvents as well as on filter media. We offer custom organic solutions for use with GC, GC-MS, HPLC, and Karl Fischer applications.

Shop at Amazon on us!

Throughout the month of September, receive a \$25 Amazon gift card with your order of Custom Mixes over \$500.

Use Promo Code **CUSTOM25** when placing your order of Custom Standards



September 2020

| SUNDAY | MONDAY | TUESDAY | WEDNESDAY | THURSDAY | FRIDAY | SATURDAY |
|--------|----------------------------------|----------------------------|----------------------------|----------------------------|----------------------------|----------|
| | | 1 Dioxin 2020 France | 2 Dioxin 2020 France | 3 Dioxin 2020 France | 4 Dioxin 2020 France | 5 |
| 6 | 7 Labor Day Company Closed | 8 | 9 | 10 | 11 | 12 |
| 13 | 14 | 15 | 16 | 17 | 18 | 19 |
| 20 | 21 | 22 | 23 | 24 | 25 | 26 |
| 27 | 28 | 29 | 30 | | | |

| AUGUST | | | | | | |
|----------|----------|----|----|----|----|----|
| S | M | T | W | T | F | S |
| | | | | | | 1 |
| 2 | 3 | 4 | 5 | 6 | 7 | 8 |
| 9 | 10 | 11 | 12 | 13 | 14 | 15 |
| 16 | 17 | 18 | 19 | 20 | 21 | 22 |
| 23 30 | 24 31 | 25 | 26 | 27 | 28 | 29 |

NOTES

| OCTOBER | | | | | | |
|---------|----|----|----|----|----|----|
| S | M | T | W | T | F | S |
| | | | | 1 | 2 | 3 |
| 4 | 5 | 6 | 7 | 8 | 9 | 10 |
| 11 | 12 | 13 | 14 | 15 | 16 | 17 |
| 18 | 19 | 20 | 21 | 22 | 23 | 24 |
| 25 | 26 | 27 | 28 | 29 | 30 | 31 |

Organic Standards

We offer multi-component Organic Certified Reference Materials for a variety of EPA and ASTM methods. All products come with an ISO 17034 Certificate of Analysis which includes concentration values verified against second source Certified Reference Materials and a weight report traceable to NIST.



Shop at Walmart on us!

Throughout the month of October, receive a \$20 Walmart gift card with your order of Organic Standards over \$300.

Use Promo Code **ORGANIC20** when placing your order of Organic Standards

October 2020

| SUNDAY | MONDAY | TUESDAY | WEDNESDAY | THURSDAY | FRIDAY | SATURDAY |
|--------|--------------------|---------|-----------|----------|--------|----------|
| | | | | 1 | 2 | 3 |
| 4 | 5 | 6 | 7 | 8 | 9 | 10 |
| 11 | 12 Columbus Day | 13 | 14 | 15 | 16 | 17 |
| 18 | 19 | 20 | 21 | 22 | 23 | 24 |
| 25 | 26 | 27 | 28 | 29 | 30 | 31 |

| SEPTEMBER | | | | | | |
|-----------|----|----|----|----|----|----|
| S | M | T | W | T | F | S |
| | | 1 | 2 | 3 | 4 | 5 |
| 6 | 7 | 8 | 9 | 10 | 11 | 12 |
| 13 | 14 | 15 | 16 | 17 | 18 | 19 |
| 20 | 21 | 22 | 23 | 24 | 25 | 26 |
| 27 | 28 | 29 | 30 | | | |

NOTES

| NOVEMBER | | | | | | |
|----------|----|----|----|----|----|----|
| S | M | T | W | T | F | S |
| 1 | 2 | 3 | 4 | 5 | 6 | 7 |
| 8 | 9 | 10 | 11 | 12 | 13 | 14 |
| 15 | 16 | 17 | 18 | 19 | 20 | 21 |
| 22 | 23 | 24 | 25 | 26 | 27 | 28 |
| 29 | 30 | | | | | |

IC Multi's

We offer a broad range of multi-component standards for IC/ISE applications. These standards can be used with methods for common anions such as EPA Method 300, Standard Method 4110, ASTM D4327; methods for cations including EPA Method 300.7; methods for speciated metals such as EPA Method 218.7; and methods for metal cyanide complexes including EPA Method 9015 and for total cyanide as in ASTM D 2036-97 to list a few.

10% off IC Multi's

**Throughout the month of November, receive 10% off
your order of IC Multi's over \$200.**

Use Promo Code **ICMULTI10** when placing your order of IC Multi's



November 2020

| SUNDAY | MONDAY | TUESDAY | WEDNESDAY | THURSDAY | FRIDAY | SATURDAY |
|--------|--------|---------|--------------------|--|----------------------|----------|
| 1 | 2 | 3 | 4 | 5 | 6 | 7 |
| 8 | 9 | 10 | 11 Veterans Day | 12 | 13 | 14 |
| 15 | 16 | 17 | 18 | 19 | 20 | 21 |
| 22 | 23 | 24 | 25 | 26 Thanksgiving Day Company Closed | 27 Company Closed | 28 |
| 29 | 30 | | | | | |

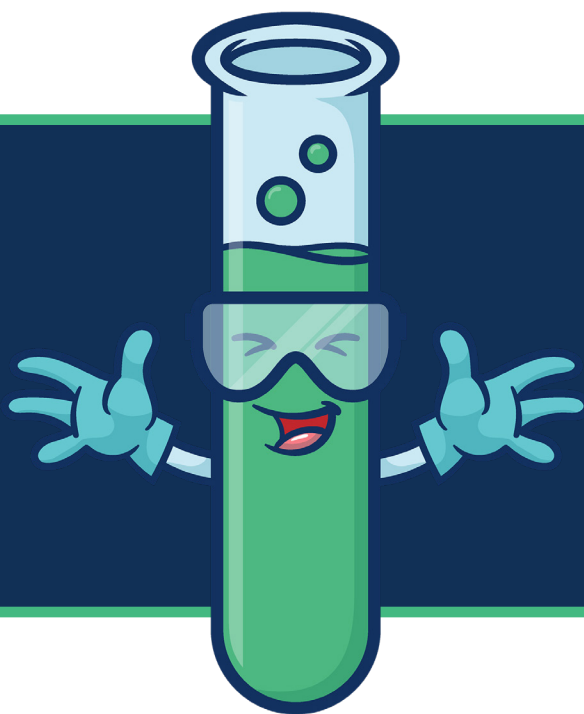
| OCTOBER | | | | | | |
|---------|----|----|----|----|----|----|
| S | M | T | W | T | F | S |
| | | | | 1 | 2 | 3 |
| 4 | 5 | 6 | 7 | 8 | 9 | 10 |
| 11 | 12 | 13 | 14 | 15 | 16 | 17 |
| 18 | 19 | 20 | 21 | 22 | 23 | 24 |
| 25 | 26 | 27 | 28 | 29 | 30 | 31 |

NOTES

| DECEMBER | | | | | | |
|----------|----|----|----|----|----|----|
| S | M | T | W | T | F | S |
| | | 1 | 2 | 3 | 4 | 5 |
| 6 | 7 | 8 | 9 | 10 | 11 | 12 |
| 13 | 14 | 15 | 16 | 17 | 18 | 19 |
| 20 | 21 | 22 | 23 | 24 | 25 | 26 |
| 27 | 28 | 29 | 30 | 31 | | |

IC Singles

We offer a broad range of single-component standards for Ion Chromatography/Ion Selective Electrode applications. These standards can be used with methods for common anions such as EPA Method 300, Standard Method 4110, ASTM D4327; methods for cations including EPA Method 300.7; methods for speciated metals such as EPA Method 218.7; and methods for metal cyanide complexes including EPA Method 9015 and for total cyanide as in ASTM D 2036-97 to list a few.



20% off IC Singles

Throughout the month of December, receive 20% off your order of IC Singles over \$500.

Use Promo Code **ICSING20** when placing your order of IC Singles

December 2020

| SUNDAY | MONDAY | TUESDAY | WEDNESDAY | THURSDAY | FRIDAY | SATURDAY |
|--------|--------|---------|-----------|--|---------------------------------------|----------|
| | | 1 | 2 | 3 | 4 | 5 |
| 6 | 7 | 8 | 9 | 10 | 11 | 12 |
| 13 | 14 | 15 | 16 | 17 | 18 | 19 |
| 20 | 21 | 22 | 23 | 24 Christmas Eve Company Closed | 25 Christmas Day Company Closed | 26 |
| 27 | 28 | 29 | 30 | 31 New Year's Eve Company Closed | | |

| NOVEMBER | | | | | | |
|----------|----|----|----|----|----|----|
| S | M | T | W | T | F | S |
| 1 | 2 | 3 | 4 | 5 | 6 | 7 |
| 8 | 9 | 10 | 11 | 12 | 13 | 14 |
| 15 | 16 | 17 | 18 | 19 | 20 | 21 |
| 22 | 23 | 24 | 25 | 26 | 27 | 28 |
| 29 | 30 | | | | | |

NOTES

| JANUARY | | | | | | |
|----------|----|----|----|----|----|----|
| S | M | T | W | T | F | S |
| | | | | | 1 | 2 |
| 3 | 4 | 5 | 6 | 7 | 8 | 9 |
| 10 | 11 | 12 | 13 | 14 | 15 | 16 |
| 17 | 18 | 19 | 20 | 21 | 22 | 23 |
| 24 31 | 25 | 26 | 27 | 28 | 29 | 30 |

We are a global manufacturer of NIST traceable standards for the calibration of analytical instruments.

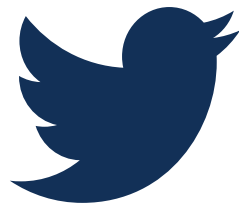
Contact Us:

**7221 Investment Drive
North Charleston, SC 29418**

Phone: 843-767-7900

**Email: info@highpuritystandards.com
www.HighPurityStandards.com**

Follow Us:



2020 Calendar

| JANUARY | | | | | | |
|---------|----|----|----|----|----|----|
| S | M | T | W | T | F | S |
| | | | 1 | 2 | 3 | 4 |
| 5 | 6 | 7 | 8 | 9 | 10 | 11 |
| 12 | 13 | 14 | 15 | 16 | 17 | 18 |
| 19 | 20 | 21 | 22 | 23 | 24 | 25 |
| 26 | 27 | 28 | 29 | 30 | 31 | |

| FEBRUARY | | | | | | |
|----------|----|----|----|----|----|----|
| S | M | T | W | T | F | S |
| | | | | | | 1 |
| 2 | 3 | 4 | 5 | 6 | 7 | 8 |
| 9 | 10 | 11 | 12 | 13 | 14 | 15 |
| 16 | 17 | 18 | 19 | 20 | 21 | 22 |
| 23 | 24 | 25 | 26 | 27 | 28 | 29 |

| MARCH | | | | | | |
|-------|----|----|----|----|----|----|
| S | M | T | W | T | F | S |
| 1 | 2 | 3 | 4 | 5 | 6 | 7 |
| 8 | 9 | 10 | 11 | 12 | 13 | 14 |
| 15 | 16 | 17 | 18 | 19 | 20 | 21 |
| 22 | 23 | 24 | 25 | 26 | 27 | 28 |
| 29 | 30 | 31 | | | | |

| APRIL | | | | | | |
|-------|----|----|----|----|----|----|
| S | M | T | W | T | F | S |
| | | | 1 | 2 | 3 | 4 |
| 5 | 6 | 7 | 8 | 9 | 10 | 11 |
| 12 | 13 | 14 | 15 | 16 | 17 | 18 |
| 19 | 20 | 21 | 22 | 23 | 24 | 25 |
| 26 | 27 | 28 | 29 | 30 | | |

| MAY | | | | | | |
|-------------------------------|----|----|----|----|----|----|
| S | M | T | W | T | F | S |
| | | | | | 1 | 2 |
| 3 | 4 | 5 | 6 | 7 | 8 | 9 |
| 10 | 11 | 12 | 13 | 14 | 15 | 16 |
| 17 | 18 | 19 | 20 | 21 | 22 | 23 |
| ²⁴ / ₃₁ | 25 | 26 | 27 | 28 | 29 | 30 |

| JUNE | | | | | | |
|------|----|----|----|----|----|----|
| S | M | T | W | T | F | S |
| | 1 | 2 | 3 | 4 | 5 | 6 |
| 7 | 8 | 9 | 10 | 11 | 12 | 13 |
| 14 | 15 | 16 | 17 | 18 | 19 | 20 |
| 21 | 22 | 23 | 24 | 25 | 26 | 27 |
| 28 | 29 | 30 | | | | |

| JULY | | | | | | |
|------|----|----|----|----|----|----|
| S | M | T | W | T | F | S |
| | | | 1 | 2 | 3 | 4 |
| 5 | 6 | 7 | 8 | 9 | 10 | 11 |
| 12 | 13 | 14 | 15 | 16 | 17 | 18 |
| 19 | 20 | 21 | 22 | 23 | 24 | 25 |
| 26 | 27 | 28 | 29 | 30 | 31 | |

| AUGUST | | | | | | |
|-------------------------------|-------------------------------|----|----|----|----|----|
| S | M | T | W | T | F | S |
| | | | | | | 1 |
| 2 | 3 | 4 | 5 | 6 | 7 | 8 |
| 9 | 10 | 11 | 12 | 13 | 14 | 15 |
| 16 | 17 | 18 | 19 | 20 | 21 | 22 |
| ²³ / ₃₀ | ²⁴ / ₃₁ | 25 | 26 | 27 | 28 | 29 |

| SEPTEMBER | | | | | | |
|-----------|----|----|----|----|----|----|
| S | M | T | W | T | F | S |
| | | 1 | 2 | 3 | 4 | 5 |
| 6 | 7 | 8 | 9 | 10 | 11 | 12 |
| 13 | 14 | 15 | 16 | 17 | 18 | 19 |
| 20 | 21 | 22 | 23 | 24 | 25 | 26 |
| 27 | 28 | 29 | 30 | | | |

| OCTOBER | | | | | | |
|---------|----|----|----|----|----|----|
| S | M | T | W | T | F | S |
| | | | | 1 | 2 | 3 |
| 4 | 5 | 6 | 7 | 8 | 9 | 10 |
| 11 | 12 | 13 | 14 | 15 | 16 | 17 |
| 18 | 19 | 20 | 21 | 22 | 23 | 24 |
| 25 | 26 | 27 | 28 | 29 | 30 | 31 |

| NOVEMBER | | | | | | |
|----------|----|----|----|----|----|----|
| S | M | T | W | T | F | S |
| 1 | 2 | 3 | 4 | 5 | 6 | 7 |
| 8 | 9 | 10 | 11 | 12 | 13 | 14 |
| 15 | 16 | 17 | 18 | 19 | 20 | 21 |
| 22 | 23 | 24 | 25 | 26 | 27 | 28 |
| 29 | 30 | | | | | |

| DECEMBER | | | | | | |
|----------|----|----|----|----|----|----|
| S | M | T | W | T | F | S |
| | | 1 | 2 | 3 | 4 | 5 |
| 6 | 7 | 8 | 9 | 10 | 11 | 12 |
| 13 | 14 | 15 | 16 | 17 | 18 | 19 |
| 20 | 21 | 22 | 23 | 24 | 25 | 26 |
| 27 | 28 | 29 | 30 | 31 | | |



7221 Investment Drive • North Charleston, SC 29418
843.767.7900 • info@highpuritystandards.com • highpuritystandards.com