



Certified Reference Materials for Ion Chromatography

ISO 9001:2015 Registered • ISO/IEC 17025:2005 Accredited • ISO 17034:2016 Accredited

IC Single and Multi-Component Standards

Standards for Ion Chromatography

- Available in single-component anion, single-component cation and multi-ion standards
- Available in 100 mL, 250 mL and 500 mL volumes
- Most are suitable for Ion Selective Electrode (ISE) methods
- Products included in our ISO 9001:2015, ISO/IEC 17025:2005 and ISO 17034:2016 scope of accreditation

IC Single-Component Standards - Anions

Component	Source	Concentration	Matrix	Volume	Part #
Acetate	Sodium Acetate	100 µg/mL	H ₂ O	100 mL	IC-AC-100
Acetate	Sodium Acetate	100 µg/mL	H ₂ O	250 mL	IC-AC-250
Acetate	Sodium Acetate	100 µg/mL	H ₂ O	500 mL	IC-AC-500
Acetate	Sodium Acetate	1,000 µg/mL	H ₂ O	100 mL	IC-AC-M-100
Acetate	Sodium Acetate	1,000 µg/mL	H ₂ O	250 mL	IC-AC-M-250
Acetate	Sodium Acetate	1,000 µg/mL	H ₂ O	500 mL	IC-AC-M-500
Bromate	Sodium Bromate	100 µg/mL	H ₂ O	100 mL	IC-BRO3-100
Bromate	Sodium Bromate	100 µg/mL	H ₂ O	250 mL	IC-BRO3-250
Bromate	Sodium Bromate	100 µg/mL	H ₂ O	500 mL	IC-BRO3-500
Bromate	Sodium Bromate	1,000 µg/mL	H ₂ O	100 mL	IC-BRO3-M-100
Bromate	Sodium Bromate	1,000 µg/mL	H ₂ O	250 mL	IC-BRO3-M-250
Bromate	Sodium Bromate	1,000 µg/mL	H ₂ O	500 mL	IC-BRO3-M-500
Bromide	Sodium Bromide	10 µg/mL	H ₂ O	100 mL	IC-BR-10-100
Bromide	Sodium Bromide	10 µg/mL	H ₂ O	250 mL	IC-BR-10-250
Bromide	Sodium Bromide	10 µg/mL	H ₂ O	500 mL	IC-BR-10-500
Bromide	Ammonium Bromide	10 µg/mL	H ₂ O	100 mL	ICP-BR-10-100
Bromide	Ammonium Bromide	10 µg/mL	H ₂ O	250 mL	ICP-BR-10-250
Bromide	Ammonium Bromide	10 µg/mL	H ₂ O	500 mL	ICP-BR-10-500
Bromide	Sodium Bromide	100 µg/mL	H ₂ O	100 mL	IC-BR-100
Bromide	Sodium Bromide	100 µg/mL	H ₂ O	250 mL	IC-BR-250
Bromide	Sodium Bromide	100 µg/mL	H ₂ O	500 mL	IC-BR-500
Bromide	Sodium Bromide	1,000 µg/mL	H ₂ O	100 mL	IC-BR-M-100
Bromide	Sodium Bromide	1,000 µg/mL	H ₂ O	250 mL	IC-BR-M-250
Bromide	Sodium Bromide	1,000 µg/mL	H ₂ O	500 mL	IC-BR-M-500
Bromide	Sodium Bromide	10,000 µg/mL	H ₂ O	100 mL	IC-BR-10M-100
Bromide	Sodium Bromide	10,000 µg/mL	H ₂ O	250 mL	IC-BR-10M-250
Bromide	Sodium Bromide	10,000 µg/mL	H ₂ O	500 mL	IC-BR-10M-500
Butyrate	Sodium Butyrate	100 µg/mL	H ₂ O	100 mL	IC-BTY-100
Butyrate	Sodium Butyrate	100 µg/mL	H ₂ O	250 mL	IC-BTY-250
Butyrate	Sodium Butyrate	100 µg/mL	H ₂ O	500 mL	IC-BTY-500
Butyrate	Sodium Butyrate	1,000 µg/mL	H ₂ O	100 mL	IC-BTY-M-100

IC Single-Component Standards - Anions (cont'd)

Component	Source	Concentration	Matrix	Volume	Part #
Butyrate	Sodium Butyrate	1,000 µg/mL	H ₂ O	250 mL	IC-BTY-M-250
Butyrate	Sodium Butyrate	1,000 µg/mL	H ₂ O	500 mL	IC-BTY-M-500
Chlorate	Sodium Chlorate	100 µg/mL	H ₂ O	100 mL	IC-CLO3-100
Chlorate	Sodium Chlorate	100 µg/mL	H ₂ O	250 mL	IC-CLO3-250
Chlorate	Sodium Chlorate	100 µg/mL	H ₂ O	500 mL	IC-CLO3-500
Chlorate	Sodium Chlorate	1,000 µg/mL	H ₂ O	100 mL	IC-CLO3-M-100
Chlorate	Sodium Chlorate	1,000 µg/mL	H ₂ O	250 mL	IC-CLO3-M-250
Chlorate	Sodium Chlorate	1,000 µg/mL	H ₂ O	500 mL	IC-CLO3-M-500
Chloride	Sodium Chloride	10 µg/mL	H ₂ O	100 mL	IC-CL-10-100
Chloride	Sodium Chloride	10 µg/mL	H ₂ O	250 mL	IC-CL-10-250
Chloride	Sodium Chloride	10 µg/mL	H ₂ O	500 mL	IC-CL-10-500
Chloride	Ammonium Chloride	10 µg/mL	H ₂ O	100 mL	ICP-CL-10-100
Chloride	Ammonium Chloride	10 µg/mL	H ₂ O	250 mL	ICP-CL-10-250
Chloride	Ammonium Chloride	10 µg/mL	H ₂ O	500 mL	ICP-CL-10-500
Chloride	Sodium Chloride	100 µg/mL	H ₂ O	100 mL	IC-CL-100
Chloride	Sodium Chloride	100 µg/mL	H ₂ O	250 mL	IC-CL-250
Chloride	Sodium Chloride	100 µg/mL	H ₂ O	500 mL	IC-CL-500
Chloride	Sodium Chloride	1,000 µg/mL	H ₂ O	100 mL	IC-CL-M-100
Chloride	Sodium Chloride	1,000 µg/mL	H ₂ O	250 mL	IC-CL-M-250
Chloride	Sodium Chloride	1,000 µg/mL	H ₂ O	500 mL	IC-CL-M-500
Chloride	Sodium Chloride	10,000 µg/mL	H ₂ O	100 mL	IC-CL-10M-100
Chloride	Sodium Chloride	10,000 µg/mL	H ₂ O	250 mL	IC-CL-10M-250
Chloride	Sodium Chloride	10,000 µg/mL	H ₂ O	500 mL	IC-CL-10M-500
Chlorite	Sodium Chlorite	100 µg/mL	H ₂ O	100 mL	IC-CLO2-100
Chlorite	Sodium Chlorite	100 µg/mL	H ₂ O	250 mL	IC-CLO2-250
Chlorite	Sodium Chlorite	100 µg/mL	H ₂ O	500 mL	IC-CLO2-500
Chlorite	Sodium Chlorite	1,000 µg/mL	H ₂ O	100 mL	IC-CLO2-M-100
Chlorite	Sodium Chlorite	1,000 µg/mL	H ₂ O	250 mL	IC-CLO2-M-250
Chlorite	Sodium Chlorite	1,000 µg/mL	H ₂ O	500 mL	IC-CLO2-M-500
Cyanide	Potassium Cyanide	100 µg/mL	2% KOH	100 mL	IC-CN-100
Cyanide	Potassium Cyanide	100 µg/mL	2% KOH	250 mL	IC-CN-250
Cyanide	Potassium Cyanide	100 µg/mL	2% KOH	500 mL	IC-CN-500
Cyanide	Potassium Cyanide	1,000 µg/mL	2% KOH	100 mL	IC-CN-M-100
Cyanide	Potassium Cyanide	1,000 µg/mL	2% KOH	250 mL	IC-CN-M-250
Cyanide	Potassium Cyanide	1,000 µg/mL	2% KOH	500 mL	IC-CN-M-500
Fluoride	Sodium Fluoride	10 µg/mL	H ₂ O	100 mL	IC-FF-10-100
Fluoride	Sodium Fluoride	10 µg/mL	H ₂ O	250 mL	IC-FF-10-250
Fluoride	Sodium Fluoride	10 µg/mL	H ₂ O	500 mL	IC-FF-10-500
Fluoride	Sodium Fluoride	100 µg/mL	H ₂ O	100 mL	IC-FF-100
Fluoride	Sodium Fluoride	100 µg/mL	H ₂ O	250 mL	IC-FF-250
Fluoride	Sodium Fluoride	100 µg/mL	H ₂ O	500 mL	IC-FF-500
Fluoride	Sodium Fluoride	1,000 µg/mL	H ₂ O	100 mL	IC-FF-M-100
Fluoride	Sodium Fluoride	1,000 µg/mL	H ₂ O	250 mL	IC-FF-M-250
Fluoride	Sodium Fluoride	1,000 µg/mL	H ₂ O	500 mL	IC-FF-M-500
Fluoride	Sodium Fluoride	10,000 µg/mL	H ₂ O	100 mL	IC-FF-10M-100
Fluoride	Sodium Fluoride	10,000 µg/mL	H ₂ O	250 mL	IC-FF-10M-250
Fluoride	Sodium Fluoride	10,000 µg/mL	H ₂ O	500 mL	IC-FF-10M-500
Formate	Sodium Formate	100 µg/mL	H ₂ O	100 mL	IC-FM-100

IC Single-Component Standards - Anions (cont'd)

Component	Source	Concentration	Matrix	Volume	Part #
Formate	Sodium Formate	100 µg/mL	H ₂ O	250 mL	IC-FM-250
Formate	Sodium Formate	100 µg/mL	H ₂ O	500 mL	IC-FM-500
Formate	Sodium Formate	1,000 µg/mL	H ₂ O	100 mL	IC-FM-M-100
Formate	Sodium Formate	1,000 µg/mL	H ₂ O	250 mL	IC-FM-M-250
Formate	Sodium Formate	1,000 µg/mL	H ₂ O	500 mL	IC-FM-M-500
Glycolate	Sodium Glycolate	100 µg/mL	H ₂ O	100 mL	IC-GLY-100
Glycolate	Sodium Glycolate	100 µg/mL	H ₂ O	250 mL	IC-GLY-250
Glycolate	Sodium Glycolate	100 µg/mL	H ₂ O	500 mL	IC-GLY-500
Glycolate	Sodium Glycolate	1,000 µg/mL	H ₂ O	100 mL	IC-GLY-M-100
Glycolate	Sodium Glycolate	1,000 µg/mL	H ₂ O	250 mL	IC-GLY-M-250
Glycolate	Sodium Glycolate	1,000 µg/mL	H ₂ O	500 mL	IC-GLY-M-500
Gold	Gold Metal	1 µg/mL	0.01% NaCN + 0.1N NaOH	100 mL	AU-CN-1-100
Gold	Gold Metal	1 µg/mL	0.01% NaCN + 0.1N NaOH	500 mL	AU-CN-1-500
Gold	Gold Metal	10 µg/mL	0.01% NaCN + 0.1N NaOH	100 mL	AU-CN-10-100
Gold	Gold Metal	10 µg/mL	0.01% NaCN + 0.1N NaOH	500 mL	AU-CN-10-500
Gold	Gold Metal	1,000 µg/mL	0.05% NaCN + 0.1N NaOH	100 mL	AU-CN-1000-100
Gold	Gold Metal	1,000 µg/mL	0.05% NaCN + 0.1N NaOH	500 mL	AU-CN-1000-500
Iodide	Ammonium Iodide	10 µg/mL	H ₂ O	100 mL	ICP-II-10-100
Iodide	Ammonium Iodide	10 µg/mL	H ₂ O	250 mL	ICP-II-10-250
Iodide	Ammonium Iodide	10 µg/mL	H ₂ O	500 mL	ICP-II-10-500
Iodide	Sodium Iodide	10 µg/mL	H ₂ O	100 mL	IC-II-10-100
Iodide	Sodium Iodide	10 µg/mL	H ₂ O	250 mL	IC-II-10-250
Iodide	Sodium Iodide	10 µg/mL	H ₂ O	500 mL	IC-II-10-500
Iodide	Sodium Iodide	100 µg/mL	H ₂ O	100 mL	IC-II-100
Iodide	Sodium Iodide	100 µg/mL	H ₂ O	250 mL	IC-II-250
Iodide	Sodium Iodide	100 µg/mL	H ₂ O	500 mL	IC-II-500
Iodide	Sodium Iodide	1,000 µg/mL	H ₂ O	100 mL	IC-II-M-100
Iodide	Sodium Iodide	1,000 µg/mL	H ₂ O	250 mL	IC-II-M-250
Iodide	Sodium Iodide	1,000 µg/mL	H ₂ O	500 mL	IC-II-M-500
Lactate	Sodium Lactate	100 µg/mL	H ₂ O	100 mL	IC-LAC-100
Lactate	Sodium Lactate	100 µg/mL	H ₂ O	250 mL	IC-LAC-250
Lactate	Sodium Lactate	100 µg/mL	H ₂ O	500 mL	IC-LAC-500
Lactate	Sodium Lactate	1,000 µg/mL	H ₂ O	100 mL	IC-LAC-M-100
Lactate	Sodium Lactate	1,000 µg/mL	H ₂ O	250 mL	IC-LAC-M-250
Lactate	Sodium Lactate	1,000 µg/mL	H ₂ O	500 mL	IC-LAC-M-500
Nitrate	Sodium Nitrate	100 µg/mL	H ₂ O	100 mL	IC-NO-100
Nitrate	Sodium Nitrate	100 µg/mL	H ₂ O	250 mL	IC-NO-250
Nitrate	Sodium Nitrate	100 µg/mL	H ₂ O	500 mL	IC-NO-500
Nitrate	Sodium Nitrate	1,000 µg/mL	H ₂ O	100 mL	IC-NO-M-100
Nitrate	Sodium Nitrate	1,000 µg/mL	H ₂ O	250 mL	IC-NO-M-250
Nitrate	Sodium Nitrate	1,000 µg/mL	H ₂ O	500 mL	IC-NO-M-500
Nitrate	Sodium Nitrate	10,000 µg/mL	H ₂ O	100 mL	IC-NO-10M-100
Nitrate	Sodium Nitrate	10,000 µg/mL	H ₂ O	200 mL	IC-NO-10M-250
Nitrate	Sodium Nitrate	10,000 µg/mL	H ₂ O	500 mL	IC-NO-10M-500
Nitrite	Sodium Nitrite	100 µg/mL	H ₂ O	100 mL	IC-N-100
Nitrite	Sodium Nitrite	100 µg/mL	H ₂ O	250 mL	IC-N-250
Nitrite	Sodium Nitrite	100 µg/mL	H ₂ O	500 mL	IC-N-500
Nitrite	Sodium Nitrite	1,000 µg/mL	H ₂ O	100 mL	IC-N-M-100

IC Single-Component Standards - Anions (cont'd)

Component	Source	Concentration	Matrix	Volume	Part #
Nitrite	Sodium Nitrite	1,000 µg/mL	H ₂ O	250 mL	IC-N-M-250
Nitrite	Sodium Nitrite	1,000 µg/mL	H ₂ O	500 mL	IC-N-M-500
Nitrogen from Nitrate	Sodium Nitrate	100 µg/mL	H ₂ O	100 mL	IC-NO3-100
Nitrogen from Nitrate	Sodium Nitrate	100 µg/mL	H ₂ O	250 mL	IC-NO3-250
Nitrogen from Nitrate	Sodium Nitrate	100 µg/mL	H ₂ O	500 mL	IC-NO3-500
Nitrogen from Nitrate	Sodium Nitrate	1,000 µg/mL	H ₂ O	100 mL	IC-NO3-M-100
Nitrogen from Nitrate	Sodium Nitrate	1,000 µg/mL	H ₂ O	250 mL	IC-NO3-M-250
Nitrogen from Nitrate	Sodium Nitrate	1,000 µg/mL	H ₂ O	500 mL	IC-NO3-M-500
Nitrogen from Nitrite	Sodium Nitrite	100 µg/mL	H ₂ O	100 mL	IC-NO2-100
Nitrogen from Nitrite	Sodium Nitrite	100 µg/mL	H ₂ O	250 mL	IC-NO2-250
Nitrogen from Nitrite	Sodium Nitrite	100 µg/mL	H ₂ O	500 mL	IC-NO2-500
Nitrogen from Nitrite	Sodium Nitrite	1,000 µg/mL	H ₂ O	100 mL	IC-NO2-M-100
Nitrogen from Nitrite	Sodium Nitrite	1,000 µg/mL	H ₂ O	250 mL	IC-NO2-M-250
Nitrogen from Nitrite	Sodium Nitrite	1,000 µg/mL	H ₂ O	500 mL	IC-NO2-M-500
Oxalate	Sodium Oxalate	100 µg/mL	H ₂ O	100 mL	IC-OX-100
Oxalate	Sodium Oxalate	100 µg/mL	H ₂ O	250 mL	IC-OX-250
Oxalate	Sodium Oxalate	100 µg/mL	H ₂ O	500 mL	IC-OX-500
Oxalate	Sodium Oxalate	1,000 µg/mL	H ₂ O	100 mL	IC-OX-M-100
Oxalate	Sodium Oxalate	1,000 µg/mL	H ₂ O	250 mL	IC-OX-M-250
Oxalate	Sodium Oxalate	1,000 µg/mL	H ₂ O	500 mL	IC-OX-M-500
Perchlorate	Sodium Perchlorate	100 µg/mL	H ₂ O	100 mL	IC-CLO4-100
Perchlorate	Sodium Perchlorate	100 µg/mL	H ₂ O	250 mL	IC-CLO4-250
Perchlorate	Sodium Perchlorate	100 µg/mL	H ₂ O	500 mL	IC-CLO4-500
Perchlorate	Sodium Perchlorate	1,000 µg/mL	H ₂ O	100 mL	IC-CLO4-M-100
Perchlorate	Sodium Perchlorate	1,000 µg/mL	H ₂ O	250 mL	IC-CLO4-M-250
Perchlorate	Sodium Perchlorate	1,000 µg/mL	H ₂ O	500 mL	IC-CLO4-M-500
Phosphate	Ammonium Dihydrogen Phosphate	100 µg/mL	H ₂ O	100 mL	IC-PP-100
Phosphate	Ammonium Dihydrogen Phosphate	100 µg/mL	H ₂ O	250 mL	IC-PP-250
Phosphate	Ammonium Dihydrogen Phosphate	100 µg/mL	H ₂ O	500 mL	IC-PP-500
Phosphate	Ammonium Dihydrogen Phosphate	1,000 µg/mL	H ₂ O	100 mL	IC-PP-M-100
Phosphate	Ammonium Dihydrogen Phosphate	1,000 µg/mL	H ₂ O	250 mL	IC-PP-M-250
Phosphate	Ammonium Dihydrogen Phosphate	1,000 µg/mL	H ₂ O	500 mL	IC-PP-M-500
Phosphate	Ammonium Dihydrogen Phosphate	10,000 µg/mL	H ₂ O	100 mL	IC-PP-10M-100
Phosphate	Ammonium Dihydrogen Phosphate	10,000 µg/mL	H ₂ O	250 mL	IC-PP-10M-250
Phosphate	Ammonium Dihydrogen Phosphate	10,000 µg/mL	H ₂ O	500 mL	IC-PP-10M-500
Phosphate	Potassium Dihydrogen Phosphate	100 µg/mL	H ₂ O	100 mL	IC-KPP-100
Phosphate	Potassium Dihydrogen Phosphate	100 µg/mL	H ₂ O	250 mL	IC-KPP-250
Phosphate	Potassium Dihydrogen Phosphate	100 µg/mL	H ₂ O	500 mL	IC-KPP-500
Phosphate	Potassium Dihydrogen Phosphate	1,000 µg/mL	H ₂ O	100 mL	IC-KPP-M-100
Phosphate	Potassium Dihydrogen Phosphate	1,000 µg/mL	H ₂ O	250 mL	IC-KPP-M-250
Phosphate	Potassium Dihydrogen Phosphate	1,000 µg/mL	H ₂ O	500 mL	IC-KPP-M-500
Phosphorus	Ammonium Dihydrogen Phosphate	100 µg/mL	H ₂ O	100 mL	IC-P-100
Phosphorus	Ammonium Dihydrogen Phosphate	100 µg/mL	H ₂ O	250 mL	IC-P-250
Phosphorus	Ammonium Dihydrogen Phosphate	100 µg/mL	H ₂ O	500 mL	IC-P-500
Phosphorus	Ammonium Dihydrogen Phosphate	1,000 µg/mL	H ₂ O	100 mL	IC-P-M-100
Phosphorus	Ammonium Dihydrogen Phosphate	1,000 µg/mL	H ₂ O	250 mL	IC-P-M-250
Phosphorus	Ammonium Dihydrogen Phosphate	1,000 µg/mL	H ₂ O	500 mL	IC-P-M-500
Phosphorus	Potassium Dihydrogen Phosphate	100 µg/mL	H ₂ O	100 mL	IC-KP-100

IC Single-Component Standards - Anions (cont'd)

Component	Source	Concentration	Matrix	Volume	Part #
Phosphorus	Potassium Dihydrogen Phosphate	100 µg/mL	H ₂ O	250 mL	IC-KP-250
Phosphorus	Potassium Dihydrogen Phosphate	100 µg/mL	H ₂ O	500 mL	IC-KP-500
Phosphorus	Potassium Dihydrogen Phosphate	1,000 µg/mL	H ₂ O	100 mL	IC-KP-M-100
Phosphorus	Potassium Dihydrogen Phosphate	1,000 µg/mL	H ₂ O	250 mL	IC-KP-M-250
Phosphorus	Potassium Dihydrogen Phosphate	1,000 µg/mL	H ₂ O	500 mL	IC-KP-M-500
Propionate	Sodium Propionate	100 µg/mL	H ₂ O	100 mL	IC-PRO-100
Propionate	Sodium Propionate	100 µg/mL	H ₂ O	250 mL	IC-PRO-250
Propionate	Sodium Propionate	100 µg/mL	H ₂ O	500 mL	IC-PRO-500
Propionate	Sodium Propionate	1,000 µg/mL	H ₂ O	100 mL	IC-PRO-M-100
Propionate	Sodium Propionate	1,000 µg/mL	H ₂ O	250 mL	IC-PRO-M-250
Propionate	Sodium Propionate	1,000 µg/mL	H ₂ O	500 mL	IC-PRO-M-500
Sulfate	Sodium Sulfate	100 µg/mL	H ₂ O	100 mL	IC-SS-100
Sulfate	Sodium Sulfate	100 µg/mL	H ₂ O	250 mL	IC-SS-250
Sulfate	Sodium Sulfate	100 µg/mL	H ₂ O	500 mL	IC-SS-500
Sulfate	Sodium Sulfate	1,000 µg/mL	H ₂ O	100 mL	IC-SS-M-100
Sulfate	Sodium Sulfate	1,000 µg/mL	H ₂ O	250 mL	IC-SS-M-250
Sulfate	Sodium Sulfate	1,000 µg/mL	H ₂ O	500 mL	IC-SS-M-500
Sulfate	Sodium Sulfate	10,000 µg/mL	H ₂ O	100 mL	IC-SS-10M-100
Sulfate	Sodium Sulfate	10,000 µg/mL	H ₂ O	250 mL	IC-SS-10M-250
Sulfate	Sodium Sulfate	10,000 µg/mL	H ₂ O	500 mL	IC-SS-10M-500
Sulfur	Sodium Sulfate	100 µg/mL	H ₂ O	100 mL	IC-SR-100
Sulfur	Sodium Sulfate	100 µg/mL	H ₂ O	250 mL	IC-SR-250
Sulfur	Sodium Sulfate	100 µg/mL	H ₂ O	500 mL	IC-SR-500
Sulfur	Sodium Sulfate	1,000 µg/mL	H ₂ O	100 mL	IC-SR-M-100
Sulfur	Sodium Sulfate	1,000 µg/mL	H ₂ O	250 mL	IC-SR-M-250
Sulfur	Sodium Sulfate	1,000 µg/mL	H ₂ O	500 mL	IC-SR-M-500
Thiocyanate	Sodium Thiocyanate	100 µg/mL	H ₂ O	100 mL	IC-SCN-100
Thiocyanate	Sodium Thiocyanate	100 µg/mL	H ₂ O	250 mL	IC-SCN-250
Thiocyanate	Sodium Thiocyanate	100 µg/mL	H ₂ O	500 mL	IC-SCN-500
Thiocyanate	Sodium Thiocyanate	1,000 µg/mL	H ₂ O	100 mL	IC-SCN-M-100
Thiocyanate	Sodium Thiocyanate	1,000 µg/mL	H ₂ O	250 mL	IC-SCN-M-250
Thiocyanate	Sodium Thiocyanate	1,000 µg/mL	H ₂ O	500 mL	IC-SCN-M-500
Thiosulfate	Sodium Thiosulfate	100 µg/mL	H ₂ O	100 mL	IC-S2O3-100
Thiosulfate	Sodium Thiosulfate	100 µg/mL	H ₂ O	250 mL	IC-S2O3-250
Thiosulfate	Sodium Thiosulfate	100 µg/mL	H ₂ O	500 mL	IC-S2O3-500
Thiosulfate	Sodium Thiosulfate	1,000 µg/mL	H ₂ O	100 mL	IC-S2O3-M-100
Thiosulfate	Sodium Thiosulfate	1,000 µg/mL	H ₂ O	250 mL	IC-S2O3-M-250
Thiosulfate	Sodium Thiosulfate	1,000 µg/mL	H ₂ O	500 mL	IC-S2O3-M-500
Valerate	Sodium Valerate	1,000 µg/mL	H ₂ O	100 mL	IC-VAL-M-100
Valerate	Sodium Valerate	1,000 µg/mL	H ₂ O	250 mL	IC-VAL-M-250
Valerate	Sodium Valerate	1,000 µg/mL	H ₂ O	500 mL	IC-VAL-M-500

IC Single-Component Standards - Cations

Component	Source	Concentration	Matrix	Volume	Part #
Ammonia as Nitrogen	Ammonium Chloride	100 µg/mL	H ₂ O	100 mL	IC-NH3-N-100
Ammonia as Nitrogen	Ammonium Chloride	100 µg/mL	H ₂ O	250 mL	IC-NH3-N-250
Ammonia as Nitrogen	Ammonium Chloride	100 µg/mL	H ₂ O	500 mL	IC-NH3-N-500

IC Single-Component Standards - Cations (cont'd)

Component	Source	Concentration	Matrix	Volume	Part #
Ammonia as Nitrogen	Ammonium Chloride	1,000 µg/mL	H ₂ O	100 mL	IC-NH3-N-M-100
Ammonia as Nitrogen	Ammonium Chloride	1,000 µg/mL	H ₂ O	250 mL	IC-NH3-N-M-250
Ammonia as Nitrogen	Ammonium Chloride	1,000 µg/mL	H ₂ O	500 mL	IC-NH3-N-M-500
Ammonium	Ammonium Chloride	100 µg/mL	H ₂ O	100 mL	IC-NH-100
Ammonium	Ammonium Chloride	100 µg/mL	H ₂ O	250 mL	IC-NH-250
Ammonium	Ammonium Chloride	100 µg/mL	H ₂ O	500 mL	IC-NH-500
Ammonium	Ammonium Chloride	1,000 µg/mL	H ₂ O	100 mL	IC-NH-M-100
Ammonium	Ammonium Chloride	1,000 µg/mL	H ₂ O	250 mL	IC-NH-M-250
Ammonium	Ammonium Chloride	1,000 µg/mL	H ₂ O	500 mL	IC-NH-M-500
Calcium	Calcium Chloride	100 µg/mL	H ₂ O	100 mL	IC-CA-100
Calcium	Calcium Chloride	100 µg/mL	H ₂ O	250 mL	IC-CA-250
Calcium	Calcium Chloride	100 µg/mL	H ₂ O	500 mL	IC-CA-500
Calcium	Calcium Chloride	1,000 µg/mL	H ₂ O	100 mL	IC-CA-M-100
Calcium	Calcium Chloride	1,000 µg/mL	H ₂ O	250 mL	IC-CA-M-250
Calcium	Calcium Chloride	1,000 µg/mL	H ₂ O	500 mL	IC-CA-M-500
Diethanolamine	Diethanolamine	100 µg/mL	H ₂ O	100 mL	IC-DEA-100
Diethanolamine	Diethanolamine	100 µg/mL	H ₂ O	250 mL	IC-DEA-250
Diethanolamine	Diethanolamine	100 µg/mL	H ₂ O	500 mL	IC-DEA-500
Diethanolamine	Diethanolamine	1,000 µg/mL	H ₂ O	100 mL	IC-DEA-M-100
Diethanolamine	Diethanolamine	1,000 µg/mL	H ₂ O	250 mL	IC-DEA-M-250
Diethanolamine	Diethanolamine	1,000 µg/mL	H ₂ O	500 mL	IC-DEA-M-500
Dimethylamine	Dimethylamine	100 µg/mL	H ₂ O	100 mL	IC-DMA-100
Dimethylamine	Dimethylamine	100 µg/mL	H ₂ O	250 mL	IC-DMA-250
Dimethylamine	Dimethylamine	100 µg/mL	H ₂ O	500 mL	IC-DMA-500
Dimethylamine	Dimethylamine	1,000 µg/mL	H ₂ O	100 mL	IC-DMA-M-100
Dimethylamine	Dimethylamine	1,000 µg/mL	H ₂ O	250 mL	IC-DMA-M-250
Dimethylamine	Dimethylamine	1,000 µg/mL	H ₂ O	500 mL	IC-DMA-M-500
Ethanolamine	Ethanolamine	100 µg/mL	H ₂ O	100 mL	IC-EA-100
Ethanolamine	Ethanolamine	100 µg/mL	H ₂ O	250 mL	IC-EA-250
Ethanolamine	Ethanolamine	100 µg/mL	H ₂ O	500 mL	IC-EA-500
Ethanolamine	Ethanolamine	1,000 µg/mL	H ₂ O	100 mL	IC-EA-M-100
Ethanolamine	Ethanolamine	1,000 µg/mL	H ₂ O	250 mL	IC-EA-M-250
Ethanolamine	Ethanolamine	1,000 µg/mL	H ₂ O	500 mL	IC-EA-M-500
Lithium	Lithium Nitrate	100 µg/mL	H ₂ O	100 mL	IC-LI-100
Lithium	Lithium Nitrate	100 µg/mL	H ₂ O	250 mL	IC-LI-250
Lithium	Lithium Nitrate	100 µg/mL	H ₂ O	500 mL	IC-LI-500
Lithium	Lithium Nitrate	1,000 µg/mL	H ₂ O	100 mL	IC-LI-M-100
Lithium	Lithium Nitrate	1,000 µg/mL	H ₂ O	250 mL	IC-LI-M-250
Lithium	Lithium Nitrate	1,000 µg/mL	H ₂ O	500 mL	IC-LI-M-500
Magnesium	Magnesium Chloride Hexahydrate	100 µg/mL	H ₂ O	100 mL	IC-MG-100
Magnesium	Magnesium Chloride Hexahydrate	100 µg/mL	H ₂ O	250 mL	IC-MG-250
Magnesium	Magnesium Chloride Hexahydrate	100 µg/mL	H ₂ O	500 mL	IC-MG-500
Magnesium	Magnesium Chloride Hexahydrate	1,000 µg/mL	H ₂ O	100 mL	IC-MG-M-100
Magnesium	Magnesium Chloride Hexahydrate	1,000 µg/mL	H ₂ O	250 mL	IC-MG-M-250
Magnesium	Magnesium Chloride Hexahydrate	1,000 µg/mL	H ₂ O	500 mL	IC-MG-M-500
Morpholine	Morpholine	100 µg/mL	H ₂ O	100 mL	IC-MOR-100
Morpholine	Morpholine	100 µg/mL	H ₂ O	250 mL	IC-MOR-250
Morpholine	Morpholine	100 µg/mL	H ₂ O	500 mL	IC-MOR-500

IC Single-Component Standards - Cations (cont'd)

Component	Source	Concentration	Matrix	Volume	Part #
Morpholine	Morpholine	1,000 µg/mL	H ₂ O	100 mL	IC-MOR-M-100
Morpholine	Morpholine	1,000 µg/mL	H ₂ O	250 mL	IC-MOR-M-250
Morpholine	Morpholine	1,000 µg/mL	H ₂ O	500 mL	IC-MOR-M-500
Nitrogen	Ammonium Chloride	100 µg/mL	H ₂ O	100 mL	IC-NT-100
Nitrogen	Ammonium Chloride	100 µg/mL	H ₂ O	250 mL	IC-NT-250
Nitrogen	Ammonium Chloride	100 µg/mL	H ₂ O	500 mL	IC-NT-500
Nitrogen	Ammonium Chloride	1,000 µg/mL	H ₂ O	100 mL	IC-NT-M-100
Nitrogen	Ammonium Chloride	1,000 µg/mL	H ₂ O	250 mL	IC-NT-M-250
Nitrogen	Ammonium Chloride	1,000 µg/mL	H ₂ O	500 mL	IC-NT-M-500
Potassium	Potassium Chloride	100 µg/mL	H ₂ O	100 mL	IC-K-100
Potassium	Potassium Chloride	100 µg/mL	H ₂ O	250 mL	IC-K-250
Potassium	Potassium Chloride	100 µg/mL	H ₂ O	500 mL	IC-K-500
Potassium	Potassium Chloride	1,000 µg/mL	H ₂ O	100 mL	IC-K-M-100
Potassium	Potassium Chloride	1,000 µg/mL	H ₂ O	250 mL	IC-K-M-250
Potassium	Potassium Chloride	1,000 µg/mL	H ₂ O	500 mL	IC-K-M-500
Sodium	Sodium Chloride	100 µg/mL	H ₂ O	100 mL	IC-NA-100
Sodium	Sodium Chloride	100 µg/mL	H ₂ O	250 mL	IC-NA-250
Sodium	Sodium Chloride	100 µg/mL	H ₂ O	500 mL	IC-NA-500
Sodium	Sodium Chloride	1,000 µg/mL	H ₂ O	100 mL	IC-NA-M-100
Sodium	Sodium Chloride	1,000 µg/mL	H ₂ O	250 mL	IC-NA-M-250
Sodium	Sodium Chloride	1,000 µg/mL	H ₂ O	500 mL	IC-NA-M-500

IC Multi-Component Standards - Anions

Components		Concentration	Matrix	Volume	Part #
Solution A*	Bromide, Chloride, Fluoride, Nitrate, Phosphate, Sulfate	100 µg/mL	H ₂ O	2 solution set at 100 mL each	IC-1-100
Solution B*	Nitrite			2 solution set at 250 mL each	IC-1-250
				2 solution set at 500 mL each	IC-1-500
Solution A*	Bromide, Chloride, Fluoride, Nitrate, Phosphate, Sulfate	1,000 µg/mL	H ₂ O	2 solution set at 100 mL each	IC-2-100
Solution B*	Nitrite			2 solution set at 250 mL each	IC-2-250
				2 solution set at 500 mL each	IC-2-500
Fluoride		20 µg/mL	H ₂ O	100 mL	IC-AN5-1-100
Chloride		30 µg/mL		250 mL	IC-AN5-1-250
Nitrate		100 µg/mL		500 mL	IC-AN5-1-500
Phosphate, Sulfate		150 µg/mL			
Fluoride		100 µg/mL	H ₂ O	100 mL	IC-AN6-1-100
Chloride		200 µg/mL		250 mL	IC-AN6-1-250
Bromide, Nitrate, Sulfate		400 µg/mL		500 mL	IC-AN6-1-500
Phosphate		600 µg/mL			

* Solution is also sold separately. Visit highpuritystandards.com.

IC Multi-Component Standards - Anions (cont'd)

Components	Concentration	Matrix	Volume	Part #
Ammonium, Calcium, Magnesium, Potassium, Sodium	100 µg/mL	H ₂ O	100 mL	IC-4-100
			250 mL	IC-4-250
			500 mL	IC-4-500

IC Multi-Component Standards - Cations

Components	Concentration	Matrix	Volume	Part #
Lithium	50 µg/mL	H ₂ O	100 mL	IC-CAT6-1-100
Sodium	200 µg/mL		250 mL	IC-CAT6-1-250
Ammonium, Magnesium	250 µg/mL		500 mL	IC-CAT6-1-500
Calcium, Potassium	500 µg/mL			
Lithium	50 µg/mL	H ₂ O	100 mL	IC-CAT6-2-100
Magnesium, Potassium, Sodium	200 µg/mL		250 mL	IC-CAT6-2-250
Ammonium	400 µg/mL		500 mL	IC-CAT6-2-500
Calcium	1,000 µg/mL			

Certificate of Analysis and Safety Data Sheets

Each product includes a Certificate of Analysis and a Safety Data Sheet. SDS information for catalog items is available at highpuritystandards.com. NIST traceability documentation, if available, is included in the Certificate of Analysis.



Organic Acids

Standards for Ion Chromatography

- Starting materials are available in organic acids or salts
- Analyte concentrations are reported for the anion component of the acid starting material
- Highest purity and stability available in the market
- Products included in our ISO 9001:2015, ISO/IEC 17025:2005 and ISO 17034:2016 scope of accreditation

Organic Acids

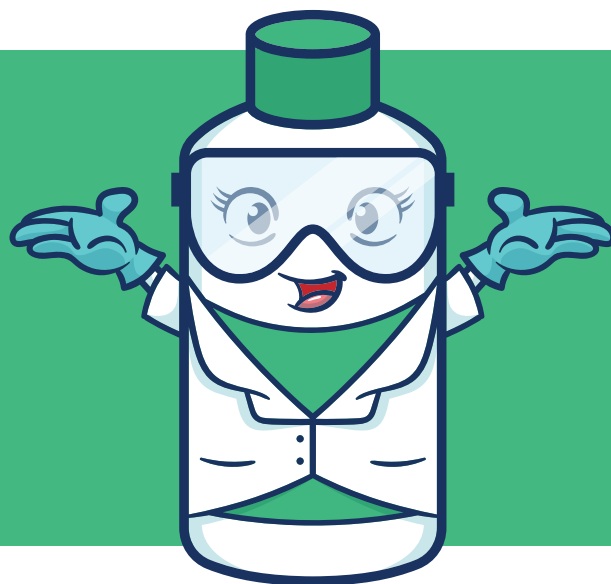
Component	Source	Concentration	Matrix	Volume	Part #
Acetate	Sodium Acetate	100 µg/mL	H ₂ O	100 mL	IC-AC-100
Acetate	Sodium Acetate	100 µg/mL	H ₂ O	250 mL	IC-AC-250
Acetate	Sodium Acetate	100 µg/mL	H ₂ O	500 mL	IC-AC-500
Acetate	Sodium Acetate	1,000 µg/mL	H ₂ O	100 mL	IC-AC-M-100
Acetate	Sodium Acetate	1,000 µg/mL	H ₂ O	250 mL	IC-AC-M-250
Acetate	Sodium Acetate	1,000 µg/mL	H ₂ O	500 mL	IC-AC-M-500
Butyrate	Sodium Butyrate	100 µg/mL	H ₂ O	100 mL	IC-BTY-100
Butyrate	Sodium Butyrate	100 µg/mL	H ₂ O	250 mL	IC-BTY-250
Butyrate	Sodium Butyrate	100 µg/mL	H ₂ O	500 mL	IC-BTY-500
Butyrate	Sodium Butyrate	1,000 µg/mL	H ₂ O	100 mL	IC-BTY-M-100
Butyrate	Sodium Butyrate	1,000 µg/mL	H ₂ O	250 mL	IC-BTY-M-250
Butyrate	Sodium Butyrate	1,000 µg/mL	H ₂ O	500 mL	IC-BTY-M-500
Formate	Sodium Formate	100 µg/mL	H ₂ O	100 mL	IC-FM-100
Formate	Sodium Formate	100 µg/mL	H ₂ O	250 mL	IC-FM-250
Formate	Sodium Formate	100 µg/mL	H ₂ O	500 mL	IC-FM-500
Formate	Sodium Formate	1,000 µg/mL	H ₂ O	100 mL	IC-FM-M-100
Formate	Sodium Formate	1,000 µg/mL	H ₂ O	250 mL	IC-FM-M-250
Formate	Sodium Formate	1,000 µg/mL	H ₂ O	500 mL	IC-FM-M-500
Glycolate	Sodium Glycolate	100 µg/mL	H ₂ O	100 mL	IC-GLY-100
Glycolate	Sodium Glycolate	100 µg/mL	H ₂ O	250 mL	IC-GLY-250
Glycolate	Sodium Glycolate	100 µg/mL	H ₂ O	500 mL	IC-GLY-500
Glycolate	Sodium Glycolate	1,000 µg/mL	H ₂ O	100 mL	IC-GLY-M-100
Glycolate	Sodium Glycolate	1,000 µg/mL	H ₂ O	250 mL	IC-GLY-M-250
Glycolate	Sodium Glycolate	1,000 µg/mL	H ₂ O	500 mL	IC-GLY-M-500
Lactate	Sodium Lactate	100 µg/mL	H ₂ O	100 mL	IC-LAC-100
Lactate	Sodium Lactate	100 µg/mL	H ₂ O	250 mL	IC-LAC-250
Lactate	Sodium Lactate	100 µg/mL	H ₂ O	500 mL	IC-LAC-500
Lactate	Sodium Lactate	1,000 µg/mL	H ₂ O	100 mL	IC-LAC-M-100
Lactate	Sodium Lactate	1,000 µg/mL	H ₂ O	250 mL	IC-LAC-M-250

Organic Acids (cont'd)

Component	Source	Concentration	Matrix	Volume	Part #
Lactate	Sodium Lactate	1,000 µg/mL	H ₂ O	500 mL	IC-LAC-M-500
Oxalate	Sodium Oxalate	100 µg/mL	H ₂ O	100 mL	IC-OX-100
Oxalate	Sodium Oxalate	100 µg/mL	H ₂ O	250 mL	IC-OX-250
Oxalate	Sodium Oxalate	100 µg/mL	H ₂ O	500 mL	IC-OX-500
Oxalate	Sodium Oxalate	1,000 µg/mL	H ₂ O	100 mL	IC-OX-M-100
Oxalate	Sodium Oxalate	1,000 µg/mL	H ₂ O	250 mL	IC-OX-M-250
Oxalate	Sodium Oxalate	1,000 µg/mL	H ₂ O	500 mL	IC-OX-M-500
Propionate	Sodium Propionate	100 µg/mL	H ₂ O	100 mL	IC-PRO-100
Propionate	Sodium Propionate	100 µg/mL	H ₂ O	250 mL	IC-PRO-250
Propionate	Sodium Propionate	100 µg/mL	H ₂ O	500 mL	IC-PRO-500
Propionate	Sodium Propionate	1,000 µg/mL	H ₂ O	100 mL	IC-PRO-M-100
Propionate	Sodium Propionate	1,000 µg/mL	H ₂ O	250 mL	IC-PRO-M-250
Propionate	Sodium Propionate	1,000 µg/mL	H ₂ O	500 mL	IC-PRO-M-500
Valerate	Sodium Valerate	1,000 µg/mL	H ₂ O	100 mL	IC-VAL-M-100
Valerate	Sodium Valerate	1,000 µg/mL	H ₂ O	250 mL	IC-VAL-M-250
Valerate	Sodium Valerate	1,000 µg/mL	H ₂ O	500 mL	IC-VAL-M-500

Shipping

Orders for catalog items are generally shipped the same day if the order is received before 2pm (Eastern Time Zone in the US). Shipment dates for custom blends are confirmed with the receipt of an order. Our standard method of shipping domestically is ground. We have very competitive shipping rates, and recommend shipping charges be prepaid and added to the invoice. Any additional charges incurred by customs and hazardous shipping regulations will be added to the shipping charge.





Ion Chromatography and Organic Acids Quote Form

Contact Person: _____
Company Name: _____ Customer Number: _____
Email: _____
Telephone Number: _____ Fax Number: _____
Address Line 1: _____ Address Line 2: _____
City: _____ State: _____
Zip/Postal Code: _____ Country: _____
Mix Name: _____ Intended Use: _____

Standards

Certificate of Analysis Information: _____

Manufacturer Information: _____

ISO 17034 Chromatogram Gravimetric Preparation

Two different lot numbers Different Source Material Single/Multiple Standard

Cations	Concentration (Indicate Units)	Anions	Concentration (Indicate Units)	Other	Concentration (Include CAS Number if Organic Component)	Component Specific Instructions (e.g. NH ₄ ⁺ as NH ₃)
Ammonium		Acetate				
Calcium		Bromate				
Diethanolamine		Bromide				
Dimethylamine		Butyrate				
Lithium		Chlorate				
Magnesium		Chloride				
Morpholine		Chlorite				
Potassium		Cyanide				
Sodium		Fluoride				
		Formate				
		Glycolate				
		Iodide				
		Lactate				
		Nitrate				
		Nitrite				
		Oxalate				
		Perchlorate				
		Phosphate				
		Propionate				
		Sulfate				
		Thiocyanate				
		Thiosulfate				
		Valerate				

Special Instructions

The custom standards will be prepared within the confines of a quality system that is ISO 9001:2015 registered and ISO/IEC 17025:2005 and ISO 17034:2016 accredited. Please indicate if the ISO 17034:2016 symbol is required for the Certificate of Analysis. Eighteen megaohm deionized water is assumed to be the matrix, note if otherwise. Also, if this is one of several standards that is to constitute a curve set, please indicate so. Please provide all special instructions on a separate piece of paper.

